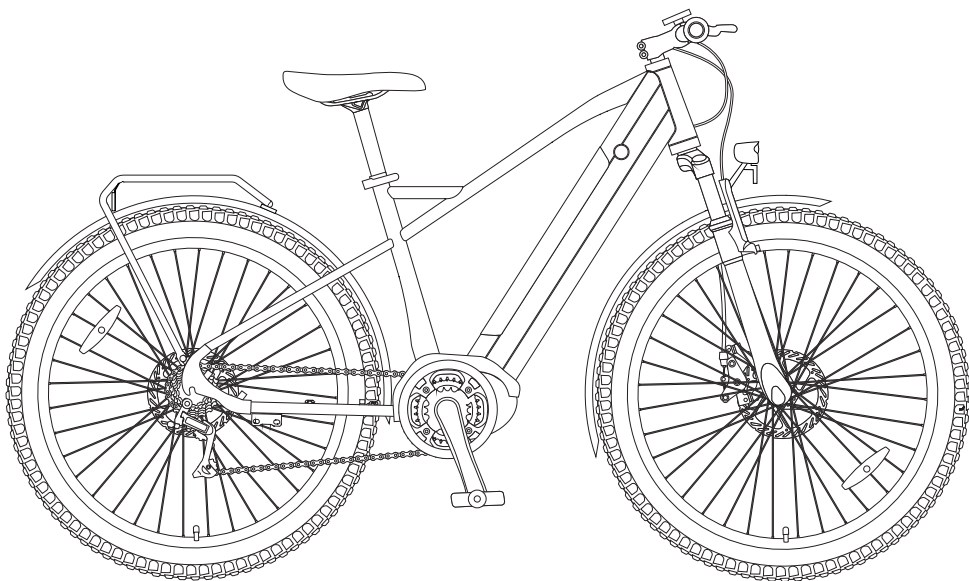


# Eleglide



## User Manual

# Pedelec and Pedal Assist

A pedelec (from pedal electric cycle) or EPAC (Electronically Power Assisted Cycles), is a type of electric bicycle where the rider's pedalling is assisted by an electric motor.

Pedal assist is a mode on your moped bike that provides power from the motor to help you pedal more easily and move faster. When you turn on pedal assist and choose your level of assist, the motor will provide a certain level of power output as you pedal. This may feel like a slight push as you ride.



# CATALOGUE

ENGLISH	.....	1~19
FRANÇAIS	.....	20~38
DEUTSCHE	.....	39~57
ESPAÑOL	.....	58~76
ITALIANO	.....	77~95
POLSKI	.....	96~114

# **\*Before your first operation, please read the user manual carefully!**

## **Contents**

1. Note
2. Warning
3. Diagram
4. Specification
5. Package List
6. Assembly Guide
7. LCD Display Guide
8. Maintenance
9. Troubleshooting
10. Warranty
11. Compliance Statements

## **1. Note**

Before your first ride, it is important for you to know your new pedelec well, so that you can get the best performance, comfort, enjoyment and safety from it during your ride. To understand the new bicycle and the correct operation, you should first read the manual carefully.

Second, it is significant to take your first ride under a safe and controlled circumstance, like staying away from cars, obstacles and other cyclists.

Third, bicycles are vehicles with certain risks. Please follow the traffic rules during cycling. It's better to learn the local traffic rules about riding an pedelec on public roads before your first ride in case you violate the regulations. For your own safety, never forget to put on a qualified helmet before you get on the pedelec.

Fourth, the pedelec is supplied without basic mandatory equipment, which may vary from place to place. Therefore, if you intend to use the pedelec on public roads, it's necessary to equip the bike with the basic mandatory equipment, in accordance with the relevant laws and regulations.

In addition, this product is designed for your personal use. Do not use it for commercial or other purposes.

Last, keep this manual safe for reference.

## **2. ⚠ Warning**

Before each charge, check the charger, cable and plug. If there is any damage, do not use the charger.

Before riding, check the tire pressure and check whether the wheels and handlebar are installed correctly and tightly.

Before riding, check whether the headlights are securely fastened in the correct position, clean and not covered by anything. Damaged reflectors must be replaced.

Besides, if the seat post in the seat tube is not inserted deep enough to reach the minimum insertion mark, the seat post may break. Check whether it is inserted deeper than the minimum insertion depth.

When braking on a wet road, the braking distance is usually longer than on a dry road. Therefore, brake earlier for a safer stop.

When you have to brake urgently, please hit the right hand brake first to stop the rear wheel, and then hit the left hand brake, especially when you brake at a high speed. If the front wheel stops suddenly while the rear wheel is still cycling at a high speed, you may fall over and get hurt. So please ride it carefully.

Furthermore, avoid puddles, wet mud, swamps, water, snow or ice. Try not to use the pedelec on a rainy, stormy or snowy day. If the bicycle's electric parts (control unit, engine and battery) get damp, wet or soaked, it will cause irreversible damage, or even a battery explosion.

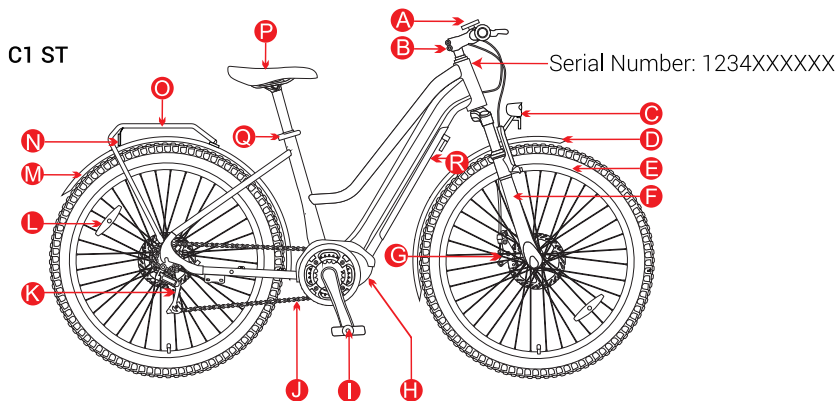
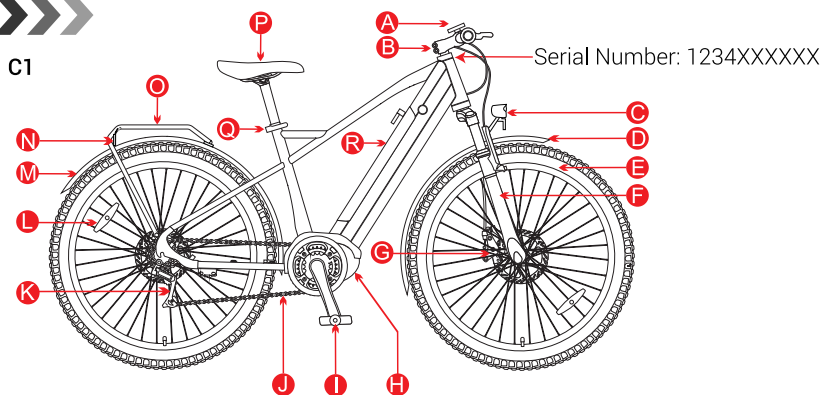
The handlebar may be affected as the user steers or brakes the bike.

This product can only be used by one adult at a time. Do not carry any extra passengers.

This vehicle is not a toy. Same as other vehicles, it is possible to fall, crash or encounter other dangerous situations. Please don't offer your pedelec to anyone that doesn't know how to use it correctly. If you let anyone else ride your bike, it will be your responsibility to ensure that all riders understand all warnings, cautions, instructions and safety precautions, and to ensure that they are able to use this product safely and responsibly and protect themselves and others from injury.

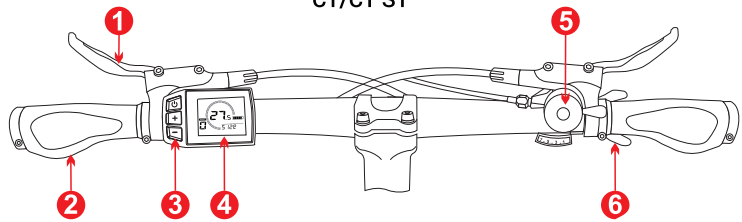
Do not modify your bike. You'll be responsible for any issues caused by your personal modification.

### 3. Diagram



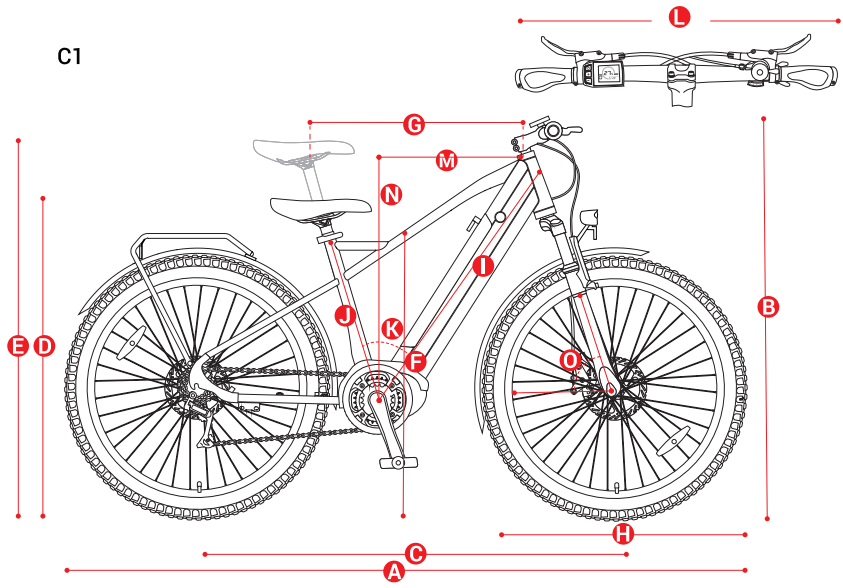
A. Handlebar with Display	B. Adjustable Stem	C. Headlight
D. Front Mudguard	E. Front Wheel	F. Front Fork
G. Brake	H. Mid-Drive Motor	I. Pedal
J. Chain	K. Rear Derailleur	L. Spoke Reflector
M. Rear Mudguard	N. Taillight	O. Rear Rack
P. Saddle	Q. Quick Release	R. Battery

C1/C1 ST



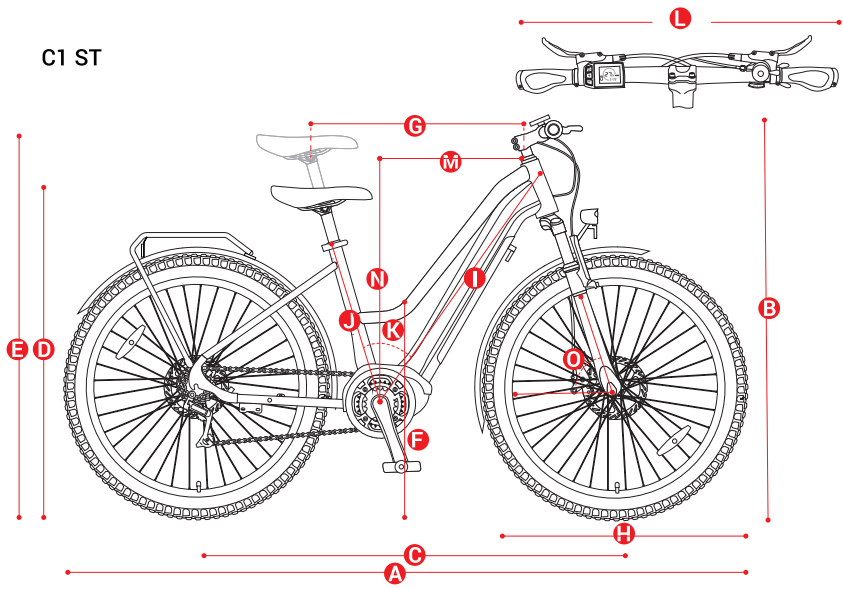
1. Brake Lever	2. Handle	3. Buttons of Display
4. LCD Display	5. Bell	6. Gear Shifter

C1



A. 72.4"	B. 44"-46"	C. 45.6"	D. 34.2"	E. 40.6"
F. 30.7"	G. 26.8"	H. 27.5"	I. 30.3"	J. 19"
K. 49.1°	L. 26"	M. 15.4"	N. 27.1"	O. 85.2°

C1 ST



A. 72.8"	B. 44"-46"	C. 46.5"	D. 33.4"	E. 39"
F. 22.8"	G. 27.1"	H. 27.5"	I. 30.7"	J. 17.5"
K. 48.8°	L. 26"	M. 15"	N. 27.1"	O. 85.2°

4. Specification

Model		C1	C1 ST
Basic Spec.	Size of Frame	27.5"x19"	27.5"x17.5"
	Unfolded Size	1840x660x1170mm	1850x660x1170mm
	Width of Handlebar	660mm (Without Grip Covers), 680mm (With Grips Covers)	
	N.W.	25.5kg	
	Waterproof Level	IPX5	
	Material of Frame	Aluminium Alloy (AL6061)	
	Max. Range	Assist Mode	150km
		Manual Mode	No Limit
	Cut-off Speed	25km/h	
	Speed Levels of Assist Mode	12/15/18/21/25 km/h (Level 1-5)	

Model		C1	C1 ST
Deraillieur	Shifter Quantity	7 (Rear)	
	Brand	Shimano	
	Control	Shift gears by pushing the thumb shifter	
Motor	Rated Power/Voltage	250W / 36V	
	Max. Inst. Power	432W	
	Max. RPM	114	
	Max. Output Torque	70N.M	
Battery	Capacity/Voltage	14.5Ah / 36V	
	Power Capacity	522Wh	
	Charging Time	7.5h	
	Protection System	Yes	
Brake	Type	Hydraulic Disc Brake & Auto Power-off Design	
Brake Disc	Outside Diameter	160mm	
	Thickness	0.8mm	
	Control	Brake front wheel by the left hand and rear wheel by the right hand in the EU; Brake front wheel by the right hand and rear wheel by the left hand in the UK;	
Tire	Size	27.5"x2.25"	
	Brand, Type, Material	CST Pneumatic Rubber Tires	
	Tire Pressure	40~70PSI	
	Best Tire Pressure	55~60PSI	
Display	Size, Type	1.8" LCD	
Shock Absorption	Type	Hydraulic Suspension with a lockout	
	Suspension Travel	100mm	
	Control	Lock/unlock the suspension by rotating the blue knob on the front fork	
Recommended Rider Heights		170-200cm	155-195cm

**Note:** the max speed and range data are provided by the Eleglide lab. The max range is achieved under the following conditions: a full charge, a 75kg load, 26°C temperature, 15km/h constant speed, on flat roads with no strong wind. The actual data may vary based on different road conditions, temperature, humidity, wind speed, and the rider's habits (the frequency of braking, speed shifting, etc.) and rider's weight.

## 5. Package List

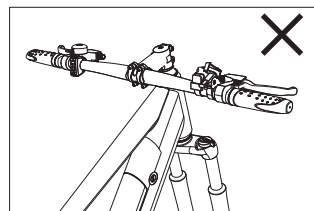
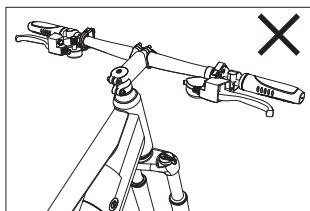
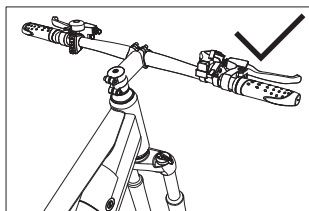
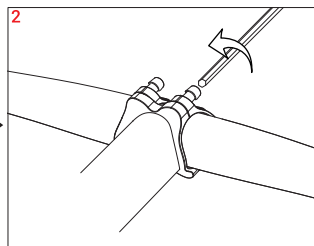
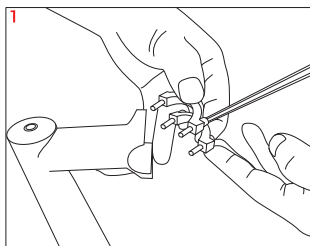
Eleglide Pedelec x 1	User Manual x 1	Charger x 1
Pedal x 2 (Left & Right)	Tool Kit x 1	Headlight x 1
Spoke Reflector x 4	Taillight x 1	LCD Display x 1
Key x 2		



## 6. Assembly Guide

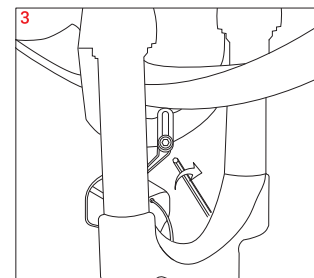
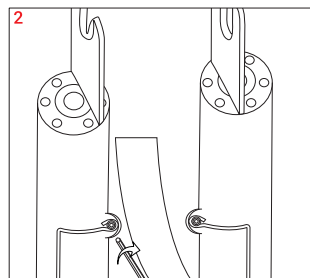
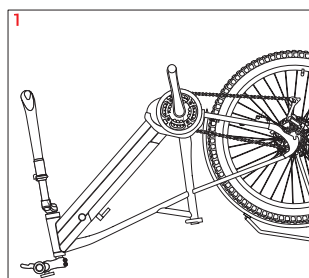
### Step 1 Install the Handlebar

- Take out the bike and make it stand up.
- Open the clip by loosening the screws on it.
- Place the handlebar in the right position and make sure the clip is in the middle of the bar.
- Lock the clip by tightening the screws.



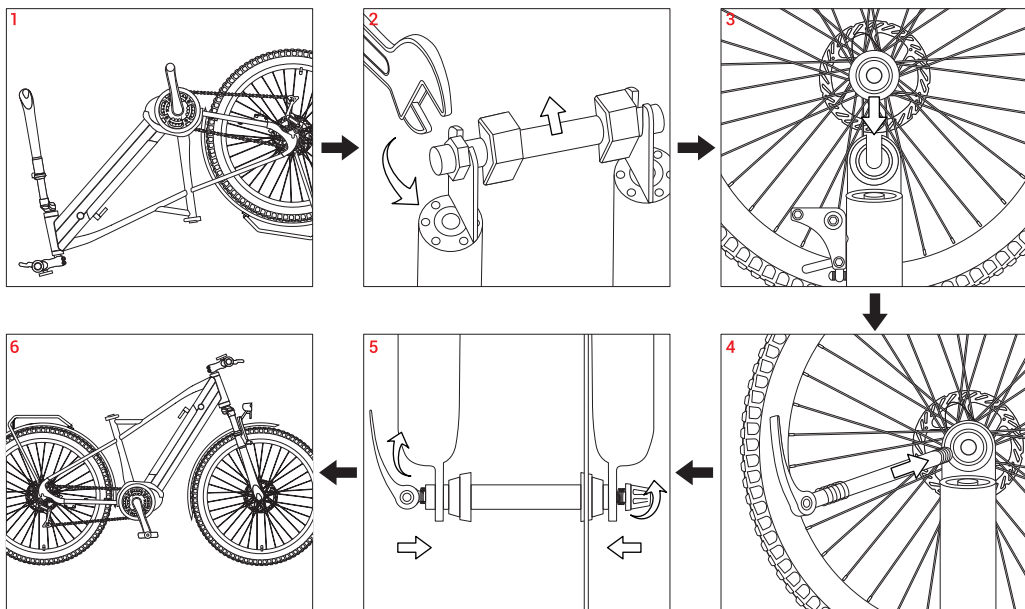
### Step 2 Install the Front Mudguard and Headlight

- Put the bike upside down and place the front mudguard between the fork lowers.
- Fix the supports of the mudguard by tightening the screws as the line drawing shows below.
- Place the headlight bracket between the fork arch and mudguard bracket.
- Fix the headlight and mudguard by tightening the screw.



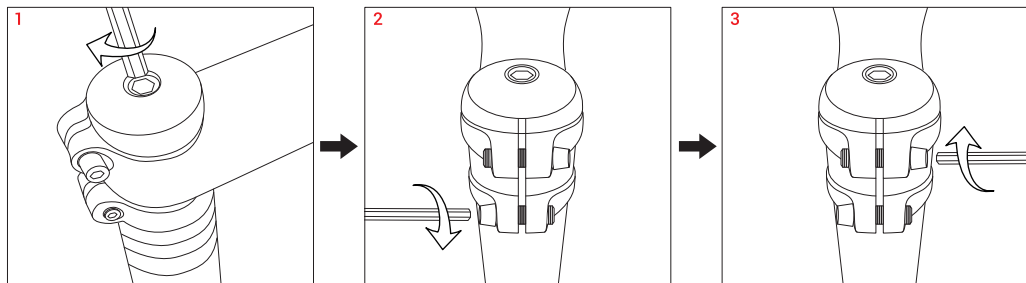
### Step 3 Install the Front Wheel

- Put the bike upside down and remove the temporary protected bar by loosening the nut on it.
- Insert the front wheel into the fork dropouts and make sure the wheel is fully seated.
- Remove the nut and one spring on the quick release.
- Slide the quick release through the hub from the opposite side of the brake disc.
- Slide the spring into the hub and tighten the nut to fix the quick release.



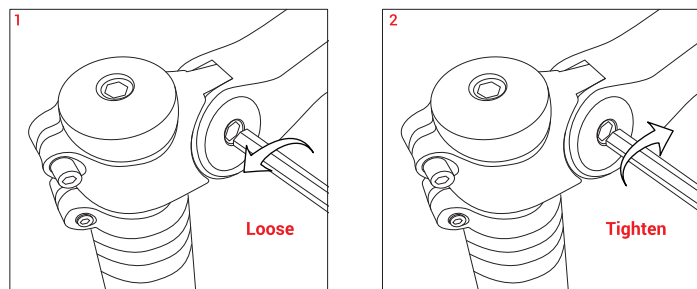
## Step 4 Fix the Headset

- A) Adjust the headset of the bike to the right position.
- B) Tighten the headset with the M4 hex key.

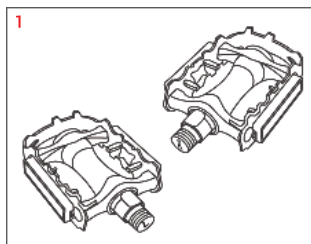


## Step 5 Adjust the Stem Angle

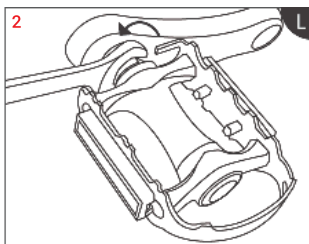
- A) Loose the stem with the M6 hex key .
- B) Adjust the stem to the angle you want and fix it by tightening the screws.



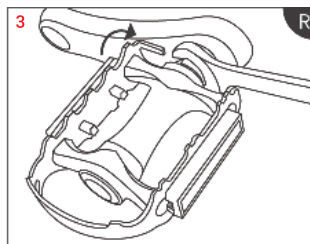
## Step 6 Install the Pedals



Pedals

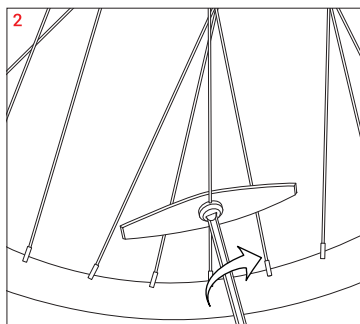
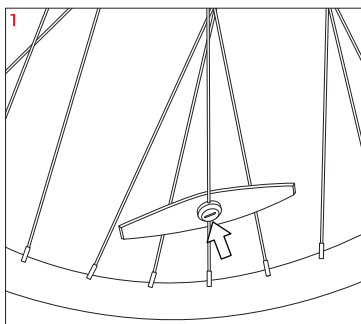


Left



Right

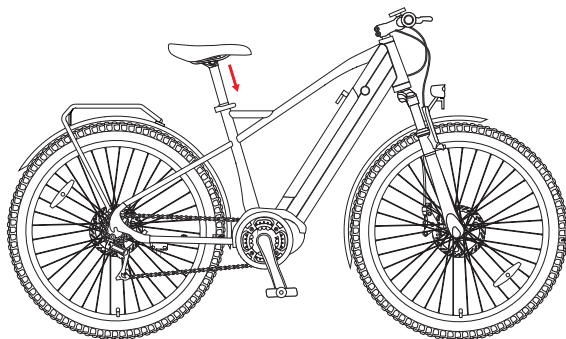
## Step 7 Install Spoke Reflectors



## Step 8 Install the Seat

A) Slide the seat post into the support frame.

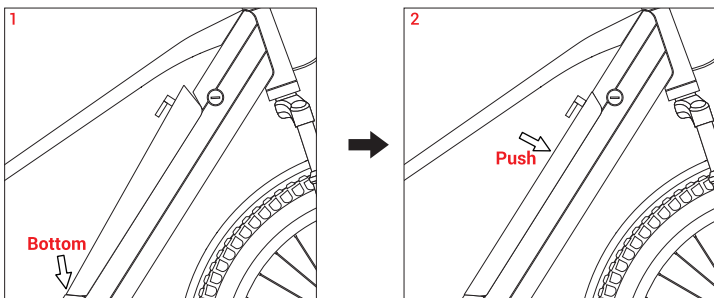
B) Adjust the seat to a suitable height and fix it by tightening and locking the quick-release clip.



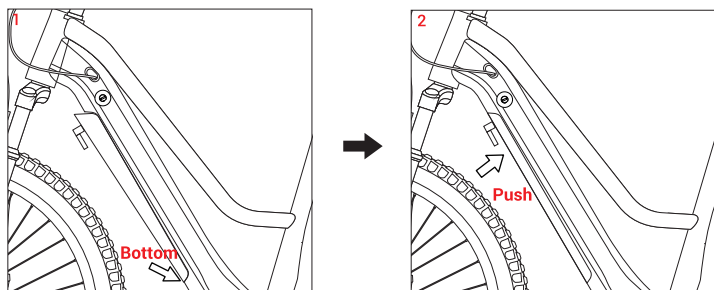
## Step 9 Install the Battery

A) Slide the battery into the battery compartment from the bottom to the top and push it in till it buckles up.

## C1



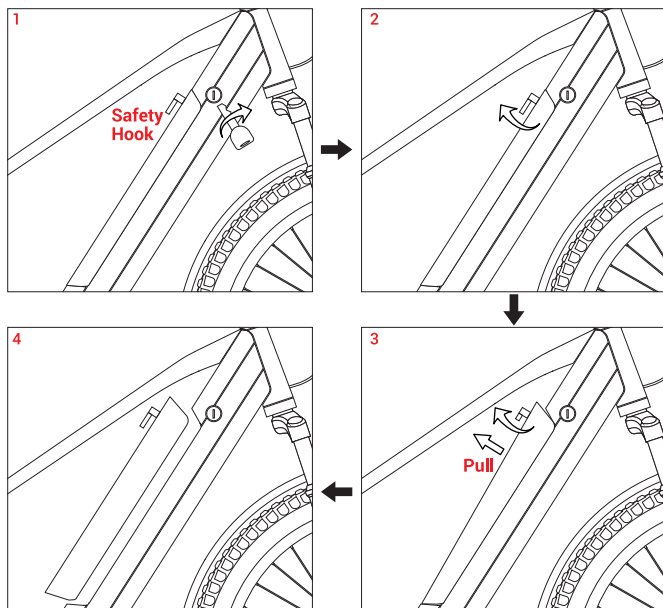
## C1 ST



## Remove the Battery

### C1

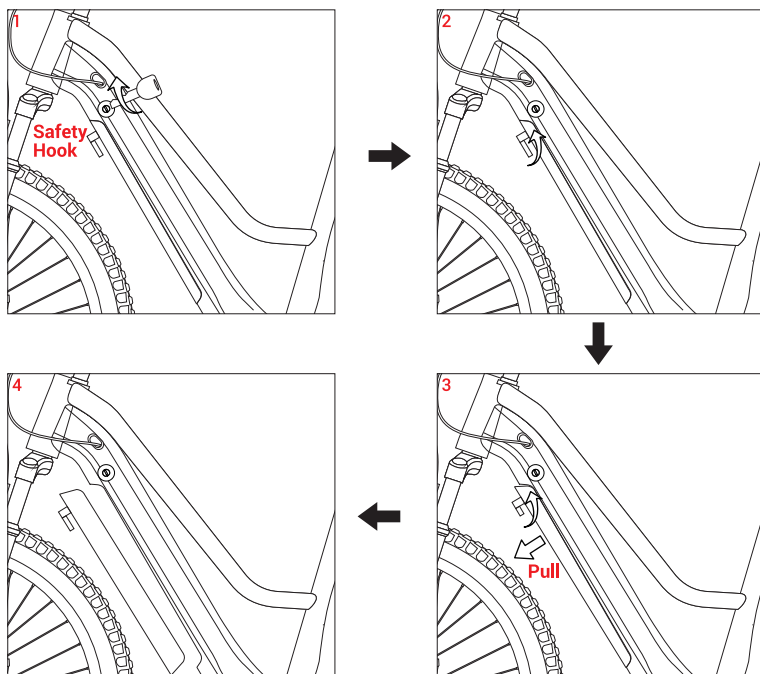
- Insert the key into the keyhole and turn the key clockwise.
- Turn the safety hook clockwise and pull up the battery simultaneously.



**C1 ST**

A) Insert the key into the keyhole and turn the key clockwise.

B) Turn the safety hook counterclockwise and pull out the battery simultaneously.



**NOTE:** *There is no need to remove the battery when you are about to turn on the power.*

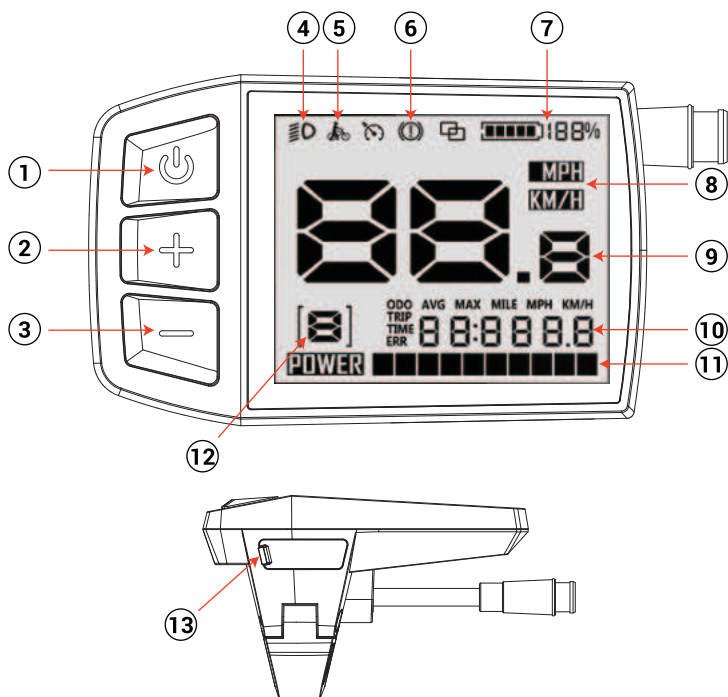
**Step 10 Turn The Power on**

A) Lock the battery and turn the display on. Then it's ready to go!

## 7. LCD Display Guide

### Warning

1. Please cut the power supply of the bike before you disconnect the display. Otherwise, it may cause permanent damage to the display.
2. Don't overtighten the screws when you install the display. The display should be mounted on the handlebar with no more than 1N.m torque. Overtightening it will cause permanent damage to the display.
3. Don't soak the display in the water or clean it with water spray. Use a soft and damp cloth to wipe it slightly. Do not clean it with detergent, alcohol, gasoline, acetone, or other corrosive/volatile solvents.
4. When you ride the bike on rainy days, please clog the USB port of the display to protect it from water and rain. Don't plug any devices in the USB port in the rain.
5. Please follow the local regulations about the disposal of the display.
6. Users will be responsible for the damage caused by improper or incorrect installation.




1	On/off	9	Real-time Speed
2	Up	10	Trip Time
3	Down		Maximum Speed
4	Light-on Mark		Average Speed
5	Walk Mode	11	Power
6	Malfunction Mark	12	Assist Level
7	Battery Level	13	USB Port with Rubber Cover
8	Speed Unit		

## Functions & Operations



### Power on/off

Long press  to turn the display on/off.


### Light on/off

Long press  for 2s to turn the bike light on/off.

### Shifting Assist Level

Short press  or  to shift among 5 speed levels, including 12km/h, 15km/h, 18km/h, 21km/h and 25km/h.








### 6km/h Walk Mode

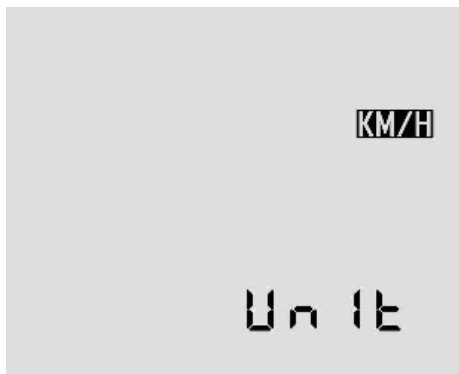
Long press  to activate the walk mode and hold the button to remain in the walk mode. The walk mode will be disabled once the button is released.

### Removing Trip Data

Long press  and  to remove the trip data.

### Hidden Menu

When the display is on, long press  and  at the same time for 2-4 seconds to enter the hidden menu. Then short press  to shift between different menu pages. After selecting the page you want, short press  or  to set the parameter on the current page. Last, press both  and  to retain your setting and exit the hidden menu.



Page "Unit": changing the speed unit between mph and km/h;



Page "Speed": setting the speed limit;



Page "Off": setting the screen timeout; The default screen timeout is 10 minutes.

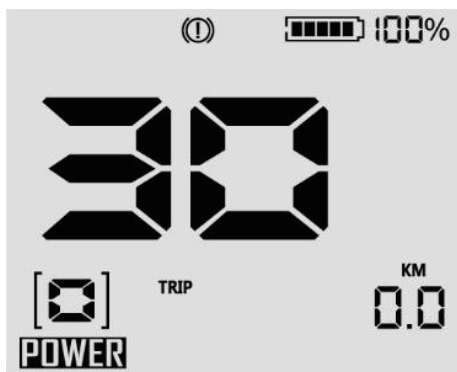


Page "Light": adjusting the backlight brightness between level 1-5;



## Error Tracking

When the malfunction mark shows up on the screen, the number at the center of the screen is the error code. Please check the following causes and solutions.



Error Codes	Causes	Solutions
21	Abnormal current or damaged MOS tube;	a.Replace the MOS tube; b.Replace the battery;
23	The motor is out of phase.	a.Replace the motor; b.Replace the motor adapter cable; c.Replace the controller;
24	Motor hall signal abnormality;	a.Replace the motor; b.Replace the motor adapter cable; c.Replace the controller;
25	Brake issue;	a.Adjust the brake lever to make sure it backs properly; b.Replace the brake lever; c.Replace the controller;
26	Undervoltage fault;	a.Charge the battery; b.Re-connect the battery and the controller; c.Replace the controller; d.Replace the display;
30	Communication error;	a.Re-connect the display and controller; b.Replace the display; c.Replace the controller;

## 8. Maintenance



### Cleaning

Use a soft and wet cloth to wipe the mainframe clean. Dirt that is hard to remove can be scrubbed with a toothbrush and toothpaste, then cleaned with a soft and damp cloth. Do not wash your pedelec with alcohol, gasoline, acetone, or other corrosive/volatile solvents. These substances may damage the appearance and internal structure of the pedelec. Do not soak the bike or wash it with a pressure washer or hose.

### Storage

#### A) Bicycle

1. Do not expose the pedelec to direct sunlight or rain for an extended period of time, and avoid storing it at a high temperature. It's better to store the bike in a dry and safe place at a temperature of 0°C-25°C.
2. Avoid corrosive gas, so as to avoid chemical corrosion and damage to the electrical parts and painted surfaces, which may lead to operational failure and accident.
3. Don't store it in an explosive or flammable environment or near flammable liquids.

#### B) Lithium-ion Battery

1. Charge the battery after each ride and avoid draining the battery completely. Because completely draining the battery may cause permanent damage to it. Never keep the lithium-ion battery discharged for a long time. If the voltage of the cell drops under allowed limit due to self-discharge, it will cause damage. For maximum durability, store the battery charged up to 50% of the maximum capacity.
2. Never charge the battery in an explosive or flammable environment or near flammable liquids. Do not charge the battery on a flammable substrate, such as paper, textiles, etc., when the battery is detached from the vehicle. Charge it at a safe place away from flammable items.
3. Never charge a battery which is already damaged or is leaking.
4. Don't charge the battery too long. Stop charging when it gets full.
5. Charge or discharge the battery at a temperature within 0~45°C.
6. It is better to store the battery indoors within 20°C~25°C temperature while it is not being used for a long time. (When used at 25°C, the battery range and performance is at its best. But using it at a temperature below 0°C can decrease its mileage and performance.)
7. Do not store the battery at a too high or too low temperature.
8. The humidity of the storage place should be 60±25%RH. As for the working place, the humidity should be 5~85%RH.
9. Do not puncture, hit or crash the battery.
10. Don't try to disassemble the old or damaged battery or throw it away. Please take it to the local professional battery recycling facility.

### C) Other Parts

Head Sets	Remove, clean and lubricate the rims annually. Replace them if necessary.
Joints	Continuously check all nuts, bolts and quick-release devices for tightness.
Brakes	Lubricate the brake cables slightly with oil monthly. Check the adjustment and replace the brake parts (blocks, shoes, pads) in time if they are worn. The cables must be replaced if they are damaged/down.
Front Suspension Fork	Entrust it to experts.
Tires	Regularly check for damage, wear, cut and air leakage.
Wheel Hubs	Lubricate the hub bearings monthly. Check and adjust the cones, if necessary, to prevent the hubs from rubbing against the forks.
Pedals	Lubricate the bearings and check for tightness.
Cranks	Lubricate the bearings monthly (unless a maintenance-free center bracket is installed on the bike). Check whether all center bracket parts are correctly tightened.
Chain	Take it off and clean it every 6 months. The chain must be clean but not dry.
Rims	Frequently check whether the wheels are tight and secure. The rims should be protected from oil, wax, grease, adhesive, etc. Check whether the spokes are loosening or missing.
Sprockets	Clean regularly as necessary and grease lightly. Keep the front and rear derailleur running smoothly by adjusting.
Saddle and Seat Post	Check whether the screws, nuts and quick-release devices are tight.
Kickstand	Clean and lightly grease it annually.

**⚠ Attention:** when lubricating, make sure the lubricant doesn't get on the brake discs and pads. Otherwise, the brake system may fail to function. Driving with a bad wheel bearing can cause the axle/hub/spindle to weld itself from friction and heat, causing the wheel to lock up and spin you out. More likely, the metal will wear away from the friction and the wheel/hub will become loose. Replace worn/damaged parts in time, such as inner and outer tires, brake kits, etc.