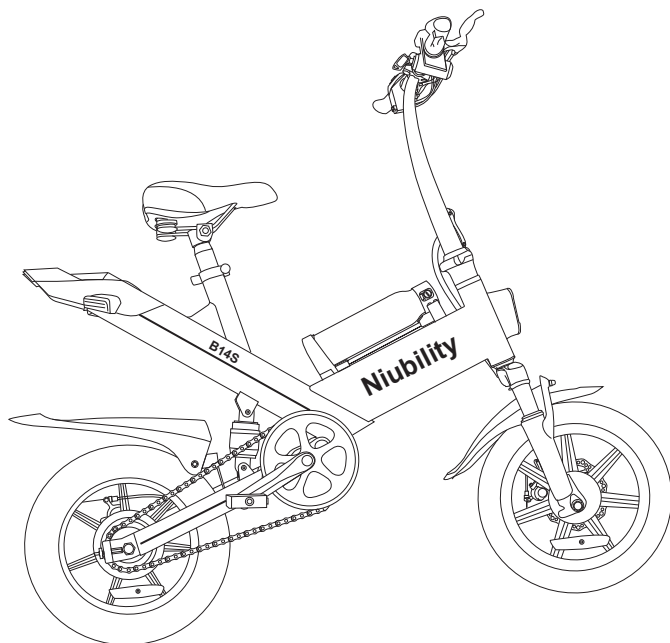


User Manual



Contents

- 1** Product Safety Notice
- 2** Package Contents
- 3** Product Overview
- 4** Installation Guide
- 8** Battery Charging Guide
- 9** Safety Tips When Charging
- 10** Display and Setting
- 13** Troubleshooting
- 14** FAQs
- 15** Warning

Product Safety Notice

Before your riding, please read this manual carefully and observe the following precautions:

01. Please remember to wear a helmet or other protectors to avoid injury when riding your electric bike.
02. Please make sure that all parts of the electric bike are properly installed and not damaged.
03. Please check whether the folded part is locked and the brake system is well.
04. Before use, please confirm whether the power is sufficient.
05. Before your riding, be sure to check that the tires are in good condition, inflated properly, and have sufficient tread remaining.
06. When feeling unwell physically or mentally due to illness or under the influence of medicine or alcohol, please do not ride ebike.
07. E-bike is designed for only one rider, and never try to ride double or more, or ride the e-bike holding a child or load.
08. Never exceed the 265 lb (**120 kg**) maximum load rating.
09. Do not ride under wet conditions. The ebike may slide from under your feet causing injury. Wet conditions may damage the electronics and void the warranty.
10. Do not modify the product from the manufacturers original design.
11. Electric bicycle is only used as a daily means of transportation, and should not be used in extreme sports or other dangerous riding methods.
12. Don't go up and down steps. Don't ride on the highway.
Please do not ride in heavy rain.

01. **Daily Maintenance Precautions:**

01. Due to the particularity of lithium batteries, users should charge them at least once within a month. Damage to the battery due to improper maintenance is not covered by the warranty.
02. Avoid prolonged exposure to sun or rain and avoid storage in places with high temperatures or corrosive gas.
03. Please don't use other brand battery, charger or cable and repair them by your own. Please don't charge overtime, it is better to charge in 0~40 °C environment
04. Measure the tire pressure at least once each month and measure again before starting a long-distance riding.
05. Without permission, never try to open or disassemble the battery, or perform any irrational operations on it or use it

Package Contents

Please carefully check the package contents, any missing or damaged, please feel free to contact our customer service for support



E-bike x 1



Charger x 1



Kettle battery x 1



Pedals x 2



Seat x 1



keys x 2



Tool x 2

Product Overview



Installation Guide

Step 1:
Slowly lift the Handlebars up



Step 2:
Press the stem quick release
in to lock



Step 3:
Adjust the handlebar to the
center position

Installation Guide

Step 4:

Adjust the direction when loading the handlebar and lock it for quick disassembly



Step 5:

Adjusting the stand pipe:
Adjust the handlebar to be perpendicular to the wheel, use M8 inner hexagon, and tighten the stand pipe nut

Step 6:

Open the stem clamp



Installation Guide

Step 7:
Slide seat into stem tube
Close the stem clamp



Step 8:
Installing the kettle battery:
Align the battery with the
battery base electrical
interface and push the
battery to the right

Step 9:
Just lock it with the key



Installation Guide



Step 10:

Locate the right-side/ left side pedal, which is marked "R," "L," should have an "R" "L," sticker attached. And then thread the left/right pedal onto the left/right crank gently by hand, turning counter-clockwise. Then tighten pedal by allen wrench.

Battery Charging Guide



Step1:

The charging port is on the tail of the battery, please see picture 1.

Step2:

Inset the charging port of the charger to connect the charge port of the battery (*please make sure the charging port is dry*).

Step3:

When it is charging ,the charger indicator **turns red**.When fully charged,the charger indicator **turns green** .When fully charged, please stop charging, because long-term charge will affect the battery life.

Step4:

After charging, please cover the charging port to prevent water from entering.



NOTE:

- 1.Please make sure the battery is properly installed on the bike before charging.
- 2.Please make sure the charger is unplugged when you want to start the ebike.

Safety Tips When Charging

01. Please charge it at least 5 hours **before first use**.
02. In order to maximum extend the battery life, please charge it every one month or two days after riding it. And Please charge it under proper temperature and environment.
03. Not charging timely may cause battery damage. As time goes by, battery capacity will gradually run out, and eventually lead to battery over-discharge.
04. Please use the battery, charger and cable provided by original manufacturer, to avoid dangers caused by battery overcharge.
05. Please ensure correct connection of the charger and the cable, as well as enough ventilation environment.
06. Please use it under dry condition. It is NOT allowed to make the charger or cable connect with water, as it may result in electric shock. Please do not touch it with wet hands. If there is any failure during charging, please immediately pull up the power plug.
07. Please make sure pull it up from the plug, not from the cable. Please do not make the charger or cable contact sharp or high articles. Please regularly make sight check to the charger and its cable.
08. If there is obvious damage of the charger or cable, in order to avoid further damage, please do not use the charger any more, and contact for exchange.
09. Please do not personally repair the battery, charger or cable. Any questions, please contact us.

How to remove the battery

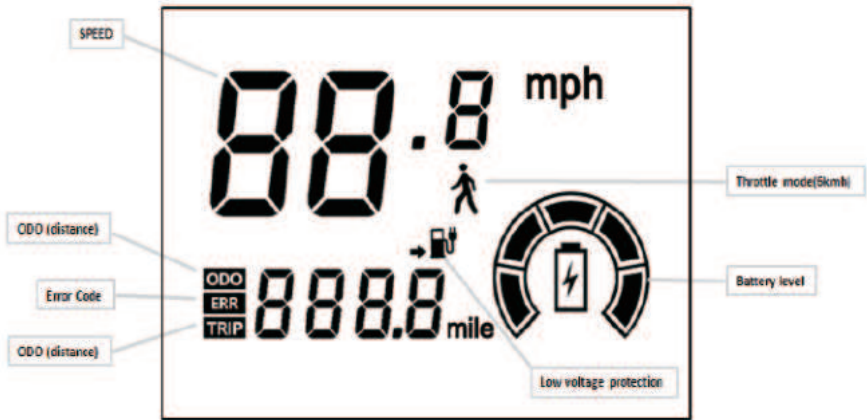


Use the tool to turn counterclockwise to remove the 2 screws below the taillight. And then remove the taillight.



Take off the black spacer (The black spacer is designed to protect the battery from damage) and remove the battery.

Display and Setting



1 Power ON/OFF
Turn the key right to power on, and press "M" button for 3 seconds to turn on/off

2 Switch Speed Mode
There are 3 speed modes, please short press "M" button to switch Mode1/2/3. The max speed in Mode 1 is 6.4 mph, the max speed in Mode 2 is 12.6mph, and the max speed in Mode 3 is 18.6mph.

3 SPEED info
The max speed is 18.6mph

00.0 mph

4 Trip(Distance) info
One trip distance:

TRIP 0000.0 mile

It will be reset when power off by key or button

Display and Setting

5

ODO (Distance) info

Accumulated distance: from 0 to 9999km, the ODO distance will be accumulated every kilometer. It can be reset under parameter setting mode, or if ODO accumulated to 9999km, the value will reset to zero automatically.



6

Battery level

It displays the battery level by 5 segments, please refer to annex for detailed definition of each segment



When the voltage of battery goes below protection voltage of controller, the battery symbol will blink and a plug symbol to recharge symbol will appear constantly

7

Error code

When the controller detects an error, the display will show it in error code

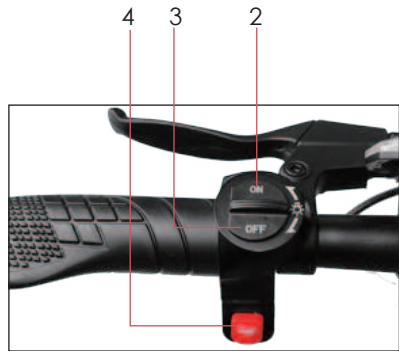
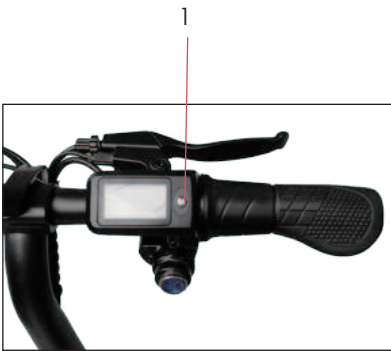


Code(Decimal)	Signification
000	Normal
002	Brake error
006	Low Battery level
007	Motor error
008	Throttle error
009	Controller error
010	UART receive error
011	UART receive error

Display and Setting

LCD Display Controls

Operation	Directions
Turn on/off the display	Press "M" button for 3 seconds(1)
Switch TRIP/ODO	short press "M" button(1)
Turn on headlight	push up (2)
Turn off headlight	push down(3)
Activate Electric Bell	Press once(4)



Troubleshooting

	Symptoms	Possible Causes	Most Common Solutions
1	The bike does not work	<ol style="list-style-type: none"> 1. Insufficient battery power 2. Faulty connections 3. Battery not fully seated in tray 4. Improper turn on sequence 5. Brakes are applied Blown discharge fuse	<ol style="list-style-type: none"> 1. Charge the battery 2. Clean and repair connectors 3. Install battery correctly 4. Turn on bike with proper sequence 5. Disengage brakes 6. Replace discharge fuse
2	Irregular acceleration and/or reduced top speed	<ol style="list-style-type: none"> 1. Insufficient battery power 2. Loose or damaged throttle 3. Misaligned or damaged magnet ring 	<ol style="list-style-type: none"> 1. Charge or replace battery 2. Replace throttle 3. Align or replace magnet ring
3	The motor does not respond when the bike is powered on	<ol style="list-style-type: none"> 1. Loose wiring 2. Loose or damaged throttle 3. Loose or damaged motor plug wire 4. Damaged motor 	<ol style="list-style-type: none"> 1. Repair and or reconnect 2. Tighten or replace 3. Secure or replace 4. Repair or replace
4	Reduced range	<ol style="list-style-type: none"> 1. Low tire pressure 2. Low or faulty battery 3. Driving with too many hills, headwind, braking, and/or excessive load 4. Battery discharged for long period of time without regular charges, aged, damaged, or unbalanced 5. Brakes rubbing 	<ol style="list-style-type: none"> 1. Adjust tire pressure 2. Check connections or charge battery 3. Assist with pedals or adjust route 4. Balance the battery; contact Tech Support if range decline persists 5. Adjust the brakes
5	The battery will not charge	<ol style="list-style-type: none"> 1. Charger not well connected 2. Charger damaged 3. Battery damaged 4. Wiring damaged 5. Blown charge fuse 	<ol style="list-style-type: none"> 1. Adjust the connections 2. Replace 3. Replace 4. Repair or replace 5. Replace charge fuse
6	Wheel or motor makes strange noises	<ol style="list-style-type: none"> 1. Loose or damaged wheel spokes or rim 2. Loose or damaged motor wiring 	<ol style="list-style-type: none"> 1. Tighten, repair, or replace 2. Reconnect or replace motor.

FAQS

1

Q: What if the electric bike arrived missing accessory or broken part?
A: Please take the photos and contact us , our service team will help you to solve the problem.

2

Q: Will my ebike arrive assembled?
A: The electric bike comes 90% assembled, and we also provide the the tools and guide for the rest part.

3

Q: Where can I get the replacement battery?
A: You can contact our after-sale team, they will help you within 24hours.

4

Q: How to get replacement keys?
A: Please contact us.

5

Q: How long does this e bike take to charge?
A: The charging time of this electric bike is 5-6 Hours. And don't charge overtime, it is better to charge in 0~40 C environment.

6

Q: What's the max speed?
A: The max speed is 15.5mph, solution speed is 19.8 mph.

7

Q: Is the handlebar adjustable?
A: The handlebar is one-step folding system, but the height of it can not be adjustable.

8

Q: Can a 5'5" person ride it?
A: the recommended rider height is 4'10"—5'10", and the max Loading is 264.5lbs.

9

Q: Does it have cruise control?
A: No it does not have cruise control

10

Q: How do I know if it's fully charged
A: When charging , the charger indicator turns red, when it is fully charged , the charger indicator turns green.

11

Q: How to charge the ebike?
A: The charger is in the package and the charging port is in the rear below the tail light.

12

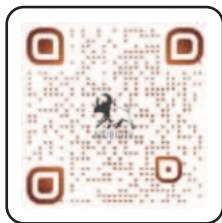
Q: How can I contact the seller.
A: Click your order or click the seller name, send us a message and we will help you solve the problem ASAP.

Warning

Warnings

Users should take full responsibility for the security problem resulting from improper use

1. Please don't use other brand battery, charger or cable and repair them by your own. Please don't charge overtime, it is better to charge in 0~40 C environment.
2. This bike is for daily use only. Don't use it in competitive situations.



<https://www.niubilityebike.com>
Email: support@niubilityebike.com

<https://www.youtube.com/channel/UCXaZGrt2SemGxdcREQs7Wkg/featured>